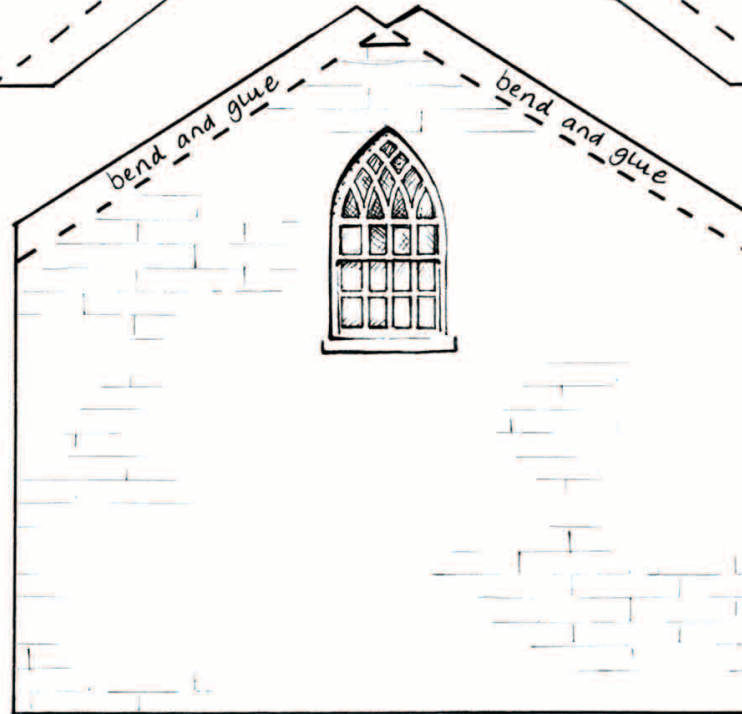
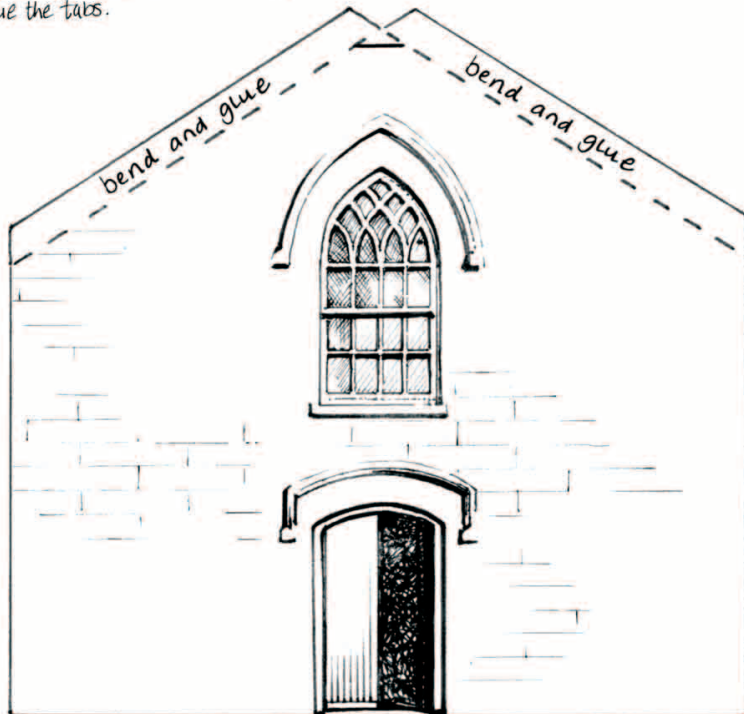
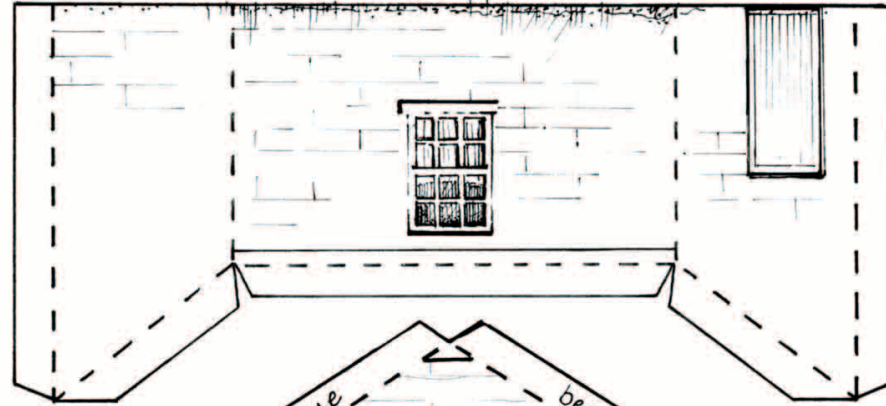
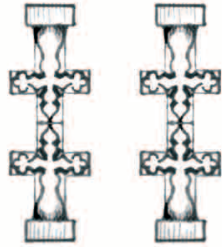


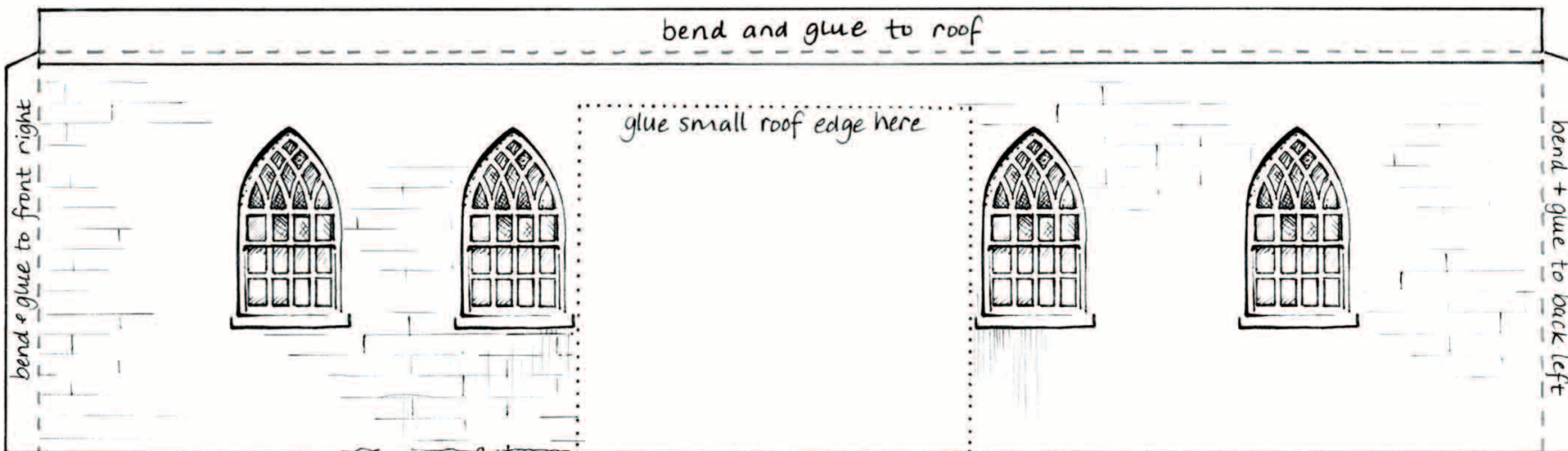
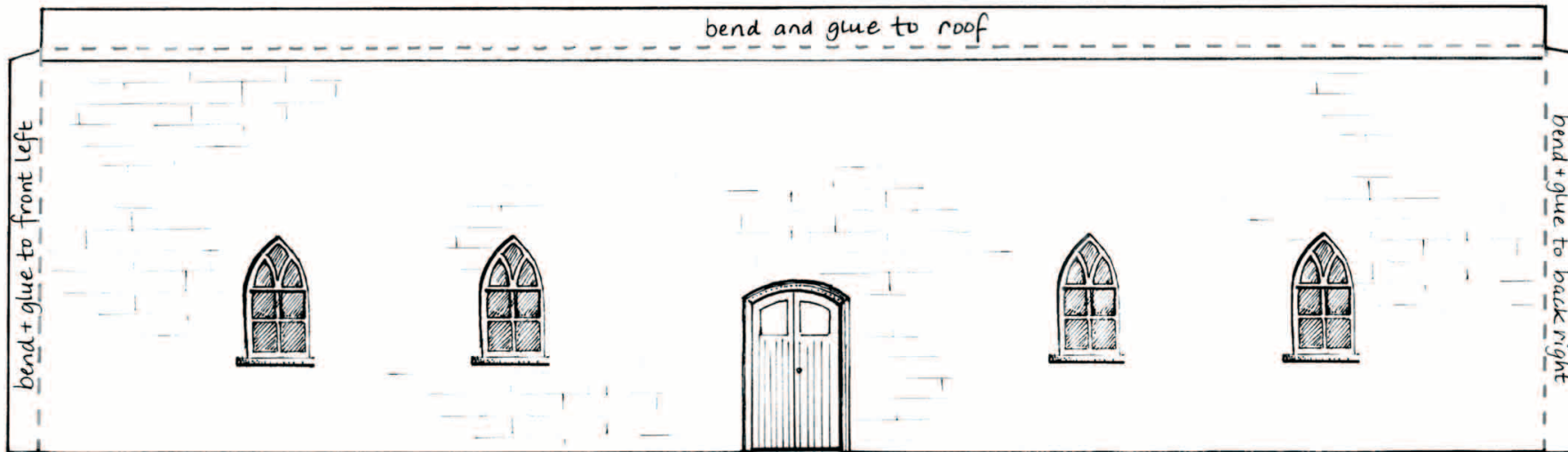
ST JOHN THE BAPTIST CHURCH

This rural Catholic Church was originally built in 1783 at Drumcree, Portadown, County Armagh.

Cut out all sections very carefully with scissors.
For best results - score the dashed lines, fold and then glue the tabs.



ST JOHN THE BAPTIST CHURCH



ST JOHN THE BAPTIST CHURCH

